

East Memorial Christian Academy

2017-2018 High School Profile

www.emcawildcats.org

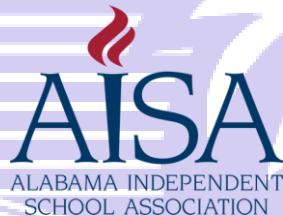
Our Community

Prattville began in 1833 when Daniel Pratt arrived on the scene. Acquiring land at the fall line of Autauga Creek, he established the town of Prattville and began manufacturing his cotton gins. Pratt's gin company became the foremost producer of cotton gins in the world. Prattville is known today as the "Birthplace of Industry in Alabama." Although ranked as one of the fastest growing areas in Alabama, Prattville maintains a quaint charm. Flowing fountains, classic older homes, and numerous new, upscale and affordable neighborhoods are all part of an eclectic blend linking Prattville's past to its future.

Our School

East Memorial Christian Academy is composed of two divisions: elementary, which includes K4-5th grades and secondary, which includes 6th-12th grades. The secondary level is further divided into middle school (6th-8th grade) and high school (9th-12th grade) categories. Secondary enrollment for 2017-2018 is 134 students and total enrollment is 247 students.

The school opened in the fall of 2003 with grades K4 through 10th, and graduated its first senior class in May of 2006. East Memorial Christian Academy **holds membership in The Alabama Independent School Association and is accredited by AdvancEd** (formerly known as the Southern Association of Colleges and Schools).



Awards and Distinctions

AISA Blue Ribbon School 2017

Volunteer of the Year for Service to Persons with Disabilities, 2017 by

The Autauga-Western Elmore / The Arc Chapter

National Beta School of Merit 2017-2018

AISA Blue Ribbon School 2016

National Beta Club School of Distinction 2016-2017

2015-2016 Class 1A AISA President's Award

AISA Blue Ribbon School 2015

AISA Blue Ribbon School 2014

AISA Blue Ribbon School 2013

2012-2013 Class 2A AISA President's Award

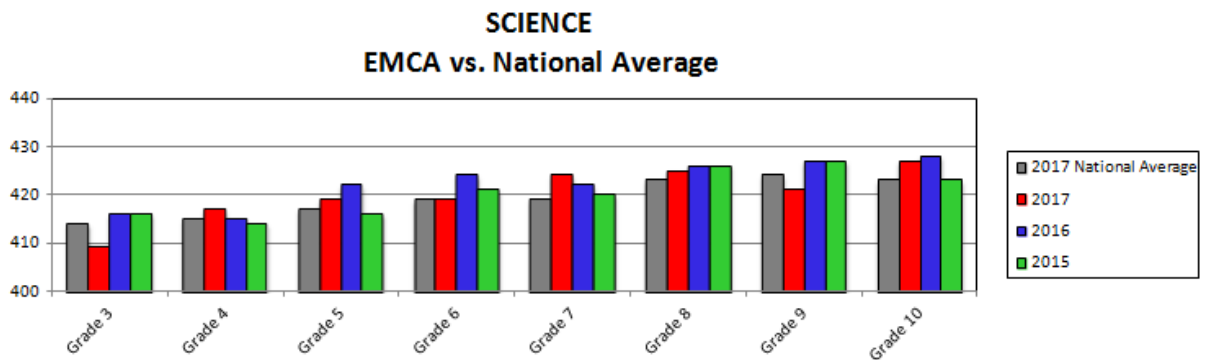
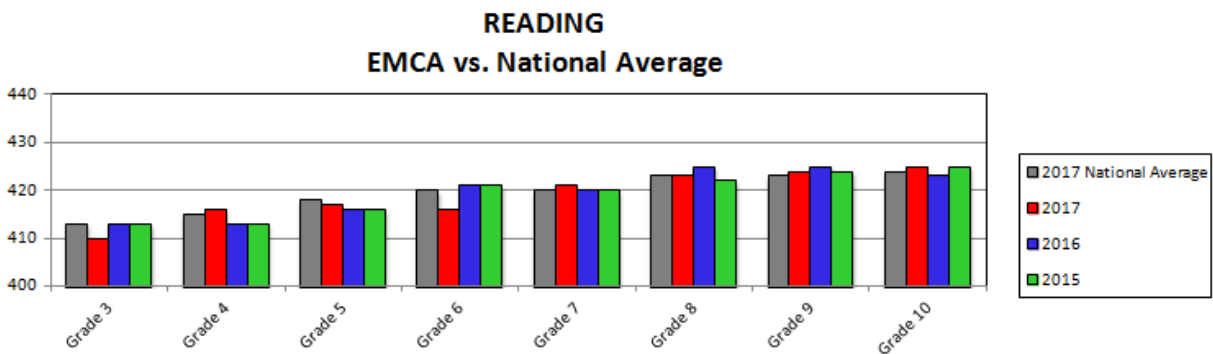
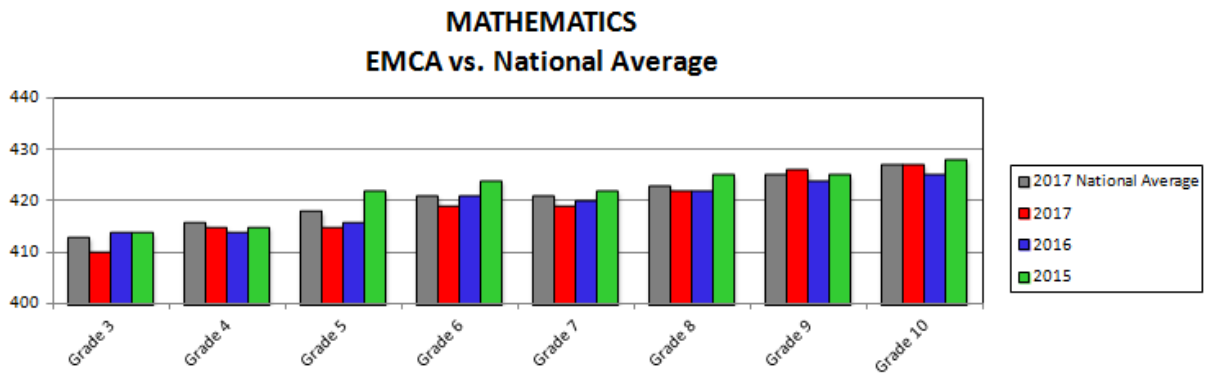
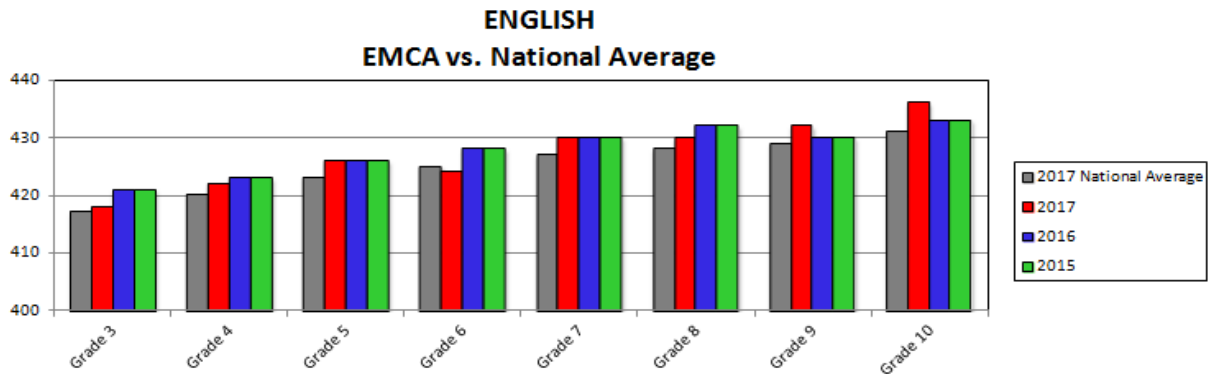
AISA Blue Ribbon School 2012

AISA Blue Ribbon School 2011

AISA Blue Ribbon School 2010

Standardized Testing:

In 2014-2015, EMCA chose to begin giving the **ACT ASPIRE** Summative Assessment to our students. The following four charts show students' subtest scores compared with the national average for the current year, by grade. Grades 3-10 are the only summative assessments available at this time by ACT ASPIRE.



College Attendance History

Class of 2017 - 26 students graduated in the Class of 2017.

24 students plan to continue their education after high school. Of the 24, 16 matriculated to 4-year institutions, 7 matriculated to community or technical colleges, and one enlisted in the armed forces. Monetary value of scholarships offered was greater than \$1,150,000 to 81% of the Class of 2017.

Class of 2016 - 14 students graduated in the Class of 2016.

Nine students continued their education after high school. Of the 14, six matriculated to 4-year institutions, three matriculated to community or technical colleges, and two enlisted in the armed forces. Monetary value of scholarships offered was greater than \$140,000 to 43% of the Class of 2016.

Class of 2015 - 17 students graduated in the Class of 2015.

15 students continued their education after high school. Of the 17, 10 matriculated to 4-year institutions, four matriculated to community colleges, two enlisted in the armed forces. Monetary value of scholarships offered was greater than \$580,000 to 59% of the Class of 2015.

Class of 2014 - 34 students graduated in the Class of 2014.

26 students continued their education after high school. Of the 26, 23 matriculated to 4-year institutions, two matriculated to community colleges and one enlisted in the armed forces. Monetary value of scholarships offered was greater than \$1.5 million to 59% of the Class of 2014.

Class of 2013 - 28 students graduated in the Class of 2013.

24 students continued their education after high school. Of the 24, 20 matriculated to 4-year institutions, two matriculated to community colleges and two enlisted in the armed forces. Monetary value of scholarships offered was greater than \$850,000 to 65% of the Class of 2013.

Combined data of the classes of 2006-2012:

Of the 183 graduates:

- 140 matriculated to 4-year institutions
- 27 matriculated to community or technical colleges
- Six enlisted in the armed forces

The following college list indicates those institutions attended by East Memorial Christian Academy graduates:

Alabama A&M University
Alabama State University
Auburn University
Auburn University Montgomery
Bob Jones University
Briar Cliff University, IA
Coastal Alabama Community College
Clemson University
College of Coastal Georgia
Covenant College, GA
Emmanuel College, Franklin, GA
Faulkner University
Grand Canyon University
Huntingdon College
Jacksonville State University
Jefferson State Community College
Judson College
Lawson State Community College
Liberty University
Louisiana Tech University
Maranatha Bible College, WI
Marine Mechanics Institute, FL
Mississippi State University
Montgomery Firefighters College
Montevallo University
Pensacola Christian College

Samford University
Shelton State Community College
South University
Southeastern Bible College
Southern Union State Community College
Southern Baptist Theological Seminary
Stetson University, FL
Trenholm State College
Trevecca Nazarene University
Troy University
Troy University of Montgomery
University of Alabama
University of Alabama at Birmingham
University of Alabama at Huntsville
University of Mobile
University of North Alabama
University of South Alabama
University of South Dakota
University of Southern Mississippi
University of West Alabama
Virginia College
Wallace Community College
West Coast Bible College, CA
Word of Life Institute, FL
Word of Life Institute, NY



Our Curriculum:

The academic program is organized on the semester schedule. A maximum load is seven credits per year. The students receive 360 minutes of instruction each day with core subjects meeting 52 minutes per day and non-core subjects meeting 45 minutes per day.

East Memorial Christian Academy offers two diploma options for graduation: AISA Advanced Diploma, and Alabama High School Diploma (Academic Diploma). Twenty-eight credits are required for graduation, ½ credit = 1 semester, 1 credit = 1 year.

Units (credits) toward graduation begin in Grade 9**. We award an Advanced Diploma to those who successfully complete the more rigorous college preparatory track and an Academic Diploma to those who successfully complete the general studies track. These tracks are as follows:

Subject	<u>Advanced Diploma</u>		<u>Academic Diploma</u>	
	Units Required	Courses	Units Required	Courses
Bible	4*		4*	
English & Lit	4	9*,10*,11*,12*	4	9*,10*,11,12
Mathematics:	4	Algebra I* (**may be taken in 8 th grade for credit)	4	Algebra I* (**may be taken in 8 th grade for credit)
		Geometry*		Geometry*
		Advanced Algebra II*		Algebra II
		Pre-Calculus*		Algebra III
		Calculus I*		
Science:	4	Biology*	4	Biology*
		Physical Science*		Physical Science*
		Advanced Chemistry*		Standard Chemistry
		Physics*		Anatomy/Physiology
Social Sciences:	4	World Geography*	4	World Geography*
		World History*		World History*
		US History to 1877*		US History to 1877*
		US History 1877 to present*		US History 1877 to present*
		Economics*		Economics*
		American Government*		American Government*
Foreign Language	2	Spanish I*	1	Spanish I*
		Spanish II*		
Physical Education	1	Lifetime Sports	1	Lifetime Sports
Computer	½		½	
Health	½		½	
Service	½	(75 documented hours of service)		
Electives	3½	(Must include ½ Fine Arts Credit)	5	(Must include ½ Fine Arts Credit)
TOTAL CREDITS:	28		28	

* Honors Classes

Dual Enrollment:

Dual Enrollment is limited to Advanced Diploma eleventh and twelfth grade students with a GPA of 3.0 or greater. A student may earn no more than two units per year in courses in which he/she has dual enrollment. Prior written approval from the administrator is required.

Grading

East Memorial Christian Academy assigns letter grades using a 4.0 system.

Letter grades are assigned as follows: A= 90-100; B= 80-89; C= 70-79; D= 60-69; F= 59 - 0.

Rank

School policy dictates that we do not rank our students.

East Memorial Christian Academy determines Valedictorian(s) and Salutatorian(s) according to the un-weighted GPA of Advanced Diploma students who have attended EMCA for at least two years (during their 11th and 12th grades).

ACT 5-year Historical Test Score data:



Class of	Average ACT Composite Score Alabama	Average ACT Composite Score EMCA Advanced Diploma Students
2018	not yet available	not yet available
2017	19.2	22.6
2016	19.1	23.3
2015	19.1	24.7
2014	20.6	22.5